

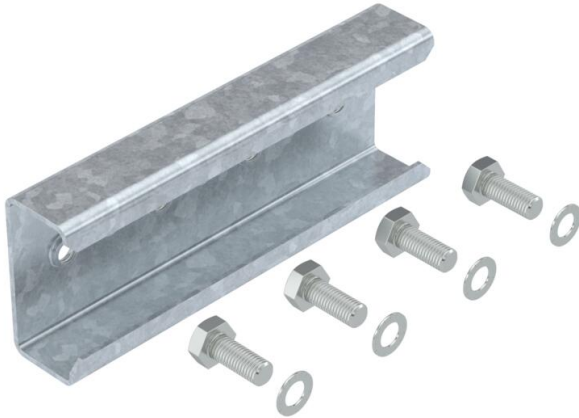
Technical data sheet

Straight connector for support profiles, free-standing system

Item number: 5901215



Straight connector to connect support profiles for free-standing photovoltaic systems. Fastening with pre-installed M10 screw, screw-on with Torx 30 wrench.



St	Steel
FT	Hot-dip galvanised

Master data

Item number	5901215
Type	LV FT
Description 1	Straight connector
Description 2	for truss profile
Manufacturer	OBO
Dimension	35x74,5x200
Colour	zinc
Material	Steel
Surface	Hot-dip galvanised
Surface standard	DIN EN ISO 1461
Smallest sales unit	20
Unit of quantity	Piece
Weight	59 kg
Weight unit	kg/100 pc.
CO2 Footprint (GWP) Cradle-to-Gate	2,0017 kg CO2e / 1 Piece

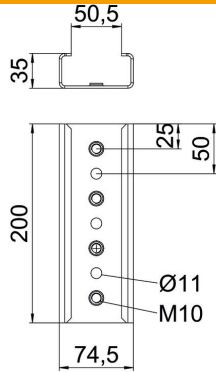
Technical data sheet

Straight connector for support profiles, free-standing system

Item number: 5901215



Dimensions



Width	200 mm
Height	74.5 mm

Technical data

With fastening material	no
Depth	35 mm
Adjustable	no
Photovoltaic connection and fastening element version	Straight connector
With module earthing	no